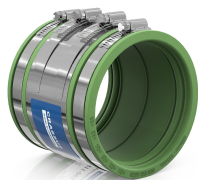




PRODUCT DATA SHEET

Product view



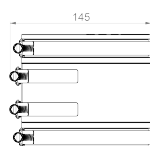
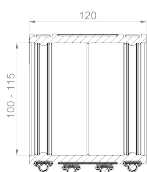
Product information

Designation	Standard Coupling CSC 115 FKM
Item number	CRA14037FKM

Product description

External adapter for connecting two piping systems with the same pipe dimensions (DN), as well as for the same or different materials and surface structures; suitable for high shear force loads; differences in external diameter of more than 10 mm should be compensated with Crassus compensating rings; noise-reducing sealing lips; suitable for horizontal or vertical installation; suitable for use in plaster, concrete, and soil; UV and weather-resistant material.

Technical illustration



Dimensioning

A Size range	100-115 mm
L Length	120 mm

Specification

Pressure-tightness	2.5 bar / 36.3 PSI
Vacuum pressure tightness	-0,3 bar
High-pressure flushing resistance	120 bar
Socket wrench insert	SW 8 mm
Tightening torque	6,0 Nm
Angular deviation (max.)	5,0°
Insertion depth (min.)	50 mm
Product-related standard	ISO 1629, ASTM D 1418, EN 10088-2
Weight	0.7 kg
Material	FKM, Stainless steel (AISI 304)

Resistances

Temperaturbeständigkeit	-25 / 200 °C
UV resistant	✓
Suitable for soil	✓
Flush-mounting suited	✓

