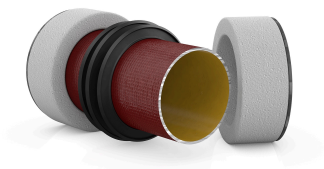




## PRODUCT DATA SHEET

### Product view



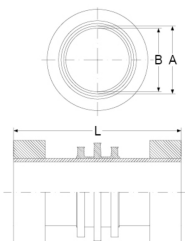
### Product information

|               |                            |
|---------------|----------------------------|
| Article group | Wall Duct SML              |
| Item number   | <b>CRA22204</b>            |
| EAN / GTIN    | 4260182347515              |
| Designation   | Wall Duct SML DN 110, 24cm |

### Product description

For installation in impermeable concrete walls; for connecting SML pipes on both sides; grey cast iron sewage pipe according to DIN EN 877; pressure-waterproof, circumferential Crassus 3-rib seal to prevent ingress of odor, gas, or water; bilateral Styrofoam recess core at the ends as well as plastic cover as installation aid

### Technical illustration



### Dimensioning

|                    |        |
|--------------------|--------|
| A   Outer diameter | 110 mm |
| B   Pipe dimension | 103 mm |
| L   Length         | 240 mm |

### Specification

|                  |                      |
|------------------|----------------------|
| Pressure density | 2.5 bar              |
| Weight           | 2.6 kg               |
| Material         | Gray cast iron, EPDM |

### Testing / Approval

MPA

### Resistances

|                       |   |
|-----------------------|---|
| UV resistant          | ✓ |
| Suitable for soil     | ✓ |
| Flush-mounting suited | ✓ |

