



PRODUCT DATA SHEET

Product view



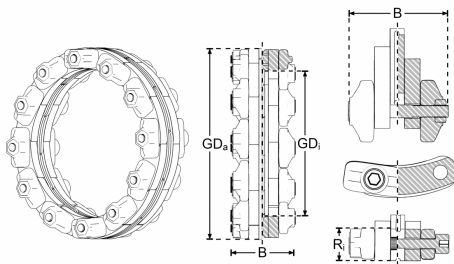
Product information

Product group	Modular Seal EPDM
Item number	CRA21300V2A
EAN / GTIN	4260391377259
Product name	Modular Seal Type CS GK-200, EPDM

Product description

Press seal in modular design; for the installation in core drill holes or wall sleeves; water-tight feed-through for pipes/cables; single sealing; against pressing water and non-pressing water; modular design ideal for subsequent installation; according to the area of application there are different elastomer and steel qualities available

Technical drawing



Dimensioning

Rs Annular gap	12.5-15.9 mm
MDa Pipe ø	21.3-323.9 mm
B Thickness	40 mm

Specification

Pressure tightness	5,0 bar
Tightening torque	3.0 Nm
Weight	0.022 kg
Material	EPDM, Stainless steel (AISI 304), PVC (red)

Approvals

MPA

Resistances

Heat resistant	120 °C
Cold resistant	-40 °C
UV resistant	✓
Suitable for soil	✓
Flush-mounting suited	✓

