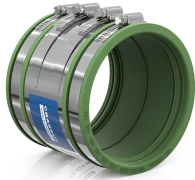




PRODUCT DATA SHEET

Product view



Product information

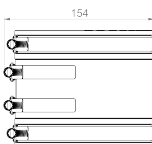
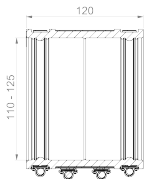
Designation Standard Coupling CSC 125 FKM

Item number **CRA14109FKM**

Product description

External adapter for connecting two piping systems with the same pipe dimensions (DN), as well as for the same or different materials and surface structures; suitable for high shear force loads; differences in external diameter of more than 10 mm should be compensated with Crassus compensating rings; noise-reducing sealing lips; suitable for horizontal or vertical installation; suitable for use in plaster, concrete, and soil; UV and weather-resistant material.

Technical illustration



Dimensioning

A | Size range 110-125 mm

L | Length 120 mm

Specification

Pressure-tightness 2.5 bar / 36.3 PSI

Vacuum pressure tightness -0,3 bar

High-pressure flushing resistance 120 bar

Socket wrench insert SW 8 mm

Tightening torque 6,0 Nm

Angular deviation (max.) 5,0°

Insertion depth (min.) 50 mm

Product-related standard ISO 1629, ASTM D 1418, EN 10088-2

Weight 0.9 kg

Material FKM, Stainless steel (AISI 304)

Resistances

Temperaturbeständigkeit -25 / 200 °C

UV resistant ✓

Suitable for soil ✓

Flush-mounting suited ✓

