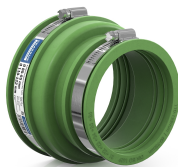




## PRODUCT DATA SHEET

### Product view



### Product information

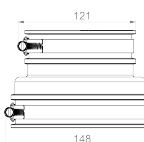
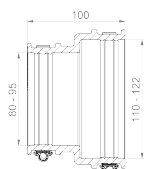
Designation Adaptor Coupling CAC 1221 FKM

Item number **CRA12040FKM**

### Product description

External adapter for connecting two piping systems with different external diameters as well as different materials or surface structures; for reducing various pipe dimensions; suitable for horizontal or vertical installation; suitable for use in plaster, concrete, and soil; UV and weather-resistant material.

### Technical illustration



### Dimensioning

A | Size range 110-122 mm

B | Clamping range 80-95 mm

L | Length 100 mm

### Specification

Pressure-tightness 0.6 bar / 8.7 PSI

Vacuum pressure tightness -0,3 bar

High-pressure flushing resistance 120 bar

Socket wrench insert SW 8 mm

Tightening torque 6,0 Nm

Angular deviation (max.) 5,0°

Insertion depth (min.) 25 mm

Product-related standard ISO 1629, ASTM D 1418

Weight 0.5 kg

Material FKM, Stainless steel (AISI 304)

### Resistances

Temperaturbeständigkeit -25 / 200 °C

UV resistant ✓

Suitable for soil ✓

Flush-mounting suited ✓

