

PRODUCT DATA SHEET

Product view



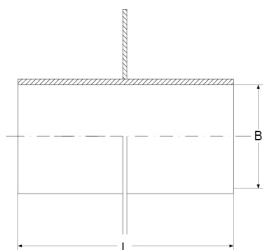
Product information

QR Code



Product group	Wall Sleeve Stainless Steel Flange
Item number	CRA22675
EAN-Code	4260431850049
Product name	Wall Sleeve Stainless Steel with centered Flange DN 200, for wall thickness 25 cm

Technical drawing



Specification

A Outside-diameter (mm)	-
B Inside-diameter (mm)	200
L Length (mm)	250
Pressure (bar)	-
Tightening torque (Nm)	-
Weight (kg)	2.87
Material	V2A

Product description

Stainless steel wall sleeve with centered flange (ID) to set in waterproof concrete; for subsequent installation of pipes/cables through a Crassus press seal; circumferential centered flange (10 cm, stainless steel V2A) to prevent ingress of water; 2 end caps as installation aid

Certificates and approvals

MPA	-
CE	-
DIBT	-
SITAC	-
ETA	-

Stable properties

Heat-resistant (Celsius Degree)	-
Cold-resistant (Celsius degree)	-
UV-resistant	Yes
Ground-suited	Yes
Flush-mounting suited	Yes

