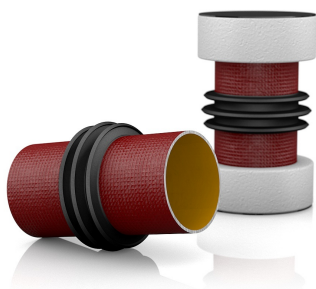


PRODUCT DATA SHEET

Product view



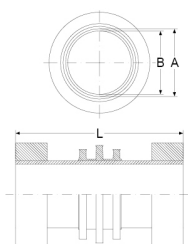
Product information

QR Code



Product group	Wall Duct SML
Item number	CRA22205
EAN-Code	4260182347522
Product name	Wall Duct SML DN 110, for wall thickness 25 cm

Technical drawing



Specification

A Outside-diameter (mm)	110
B Inside-diameter (mm)	103
L Length (mm)	250
Pressure (bar)	2.5
Tightening torque (Nm)	-
Weight (kg)	2.6
Material	Cast iron / EPDM

Product description

For the installation in waterproof concrete to connect on both sides SML-pipes; gray cast iron wastewater pipe in accordance with DIN EN 877; form and pressure stable solid wall pipe; water pressure-tight, bonded Power-Profile to prevent ingress of odor, gas or water; 2 end caps as installation aid and on each side a styrofoam recess

Certificates and approvals

MPA	Yes
CE	-
DIBT	-
SITAC	-
ETA	-

Stable properties

Heat-resistant (Celsius Degree)	-
Cold-resistant (Celsius degree)	-
UV-resistant	Yes
Ground-suited	Yes
Flush-mounting suited	Yes

