

## PRODUCT DATA SHEET

### Product view



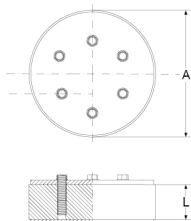
### Product information

QR Code



Product group	Press Seal Type DS Blind Insert
Item number	<b>CRA21091V4A</b>
EAN-Code	4260391374425
Product name	Press Seal Type DS, Blind Insert core drill hole/Wall Sleeve 250mm

### Technical drawing



### Specification

A   Core drill hole (mm)	250
B   Pipes / Cables $\varnothing$ (mm)	-
L   Seal (mm)	40
Pressure (bar)	3
Tightening torque (Nm)	10.0
Weight (kg)	6.4
Material	EPDM / V4A

### Product description

For the permanent or short-term water-tight sealing of a core drill hole or wall sleeve; double sealing, against pressing water and non-pressing water; water-tight welded bolts for an optimum of steadiness and corrosion protection

### Certificates and approvals

MPA	Yes
CE	-
DIBT	-
SITAC	-
ETA	-

### Stable properties

Heat-resistant (Celsius Degree)	-
Cold-resistant (Celsius degree)	-
UV-resistant	Yes
Ground-suited	Yes
Flush-mounting suited	Yes

