

## PRODUCT DATA SHEET

### Product view



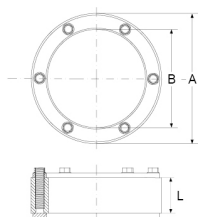
### Product information

QR Code



|               |   |
|---------------|---|
| Product group | Press Seal Type CMS60   |
| Item number   | <b>CRA21127V2A</b>  |
| EAN-Code      | 4260391371783   |
| Product name  | Press Seal Type CMS60, core drill hole/Wall Sleeve 150mm for pipes/cables 0-125mm |

### Technical drawing



### Specification

|                                       |            |
|---------------------------------------|------------|
| A   Core drill hole (mm)              | 150        |
| B   Pipes / Cables $\varnothing$ (mm) | 0-125      |
| L   Seal (mm)                         | 60         |
| Pressure (bar)                        | 5          |
| Tightening torque (Nm)                | -          |
| Weight (kg)                           | 0          |
| Material                              | EPDM / V2A |

### Product description

Custom-made press seal with freely selectable sizes of pipe/cable diameter; for the installation in core drill holes or wall sleeves; water-tight feed-through for pipes/cables; against pressing water and non-pressing water; water-tight welded bolts for an optimum of steadiness and corrosion protection

### Certificates and approvals

|       |     |
|-------|-----|
| MPA   | Yes |
| CE    | -   |
| DIBT  | -   |
| SITAC | -   |
| ETA   | -   |

### Stable properties

|                                 |     |
|---------------------------------|-----|
| Heat-resistant (Celcius Degree) | -   |
| Cold-resistant (Celsius degree) | -   |
| UV-resistant                    | Yes |
| Ground-suited                   | Yes |
| Flush-mounting suited           | Yes |

