

PRODUCT DATA SHEET

Product view



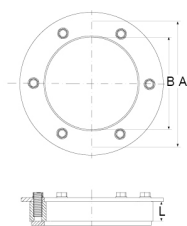
Product information

QR Code



| | |
|---------------|--|
| Product group | Press Seal Type CMS30-SF |
| Item number | CRA21170V4A |
| EAN-Code | 4260391375910 |
| Product name | Press Seal Type CMS30-GF, core drill hole/Wall Sleeve 200mm for pipes/cables 0-175mm |

Technical drawing



Specification

| | |
|---------------------------------------|------------|
| A Core drill hole (mm) | 200 |
| B Pipes / Cables \varnothing (mm) | 0-175 |
| L Seal (mm) | 30 |
| Pressure (bar) | 2.5 |
| Tightening torque (Nm) | - |
| Weight (kg) | 0 |
| Material | EPDM / V4A |

Product description

Custom-made press seal with stainless steel flange, circumferential 10mm; freely selectable sizes of pipe/cable diameter; for the installation in core drill holes or wall sleeves; water-tight feed-through for pipes/cables; against pressing water and non-pressing water; water-tight welded bolts for an optimum of steadiness and corrosion protection

Certificates and approvals

| | |
|-------|-----|
| MPA | Yes |
| CE | - |
| DIBT | - |
| SITAC | - |
| ETA | - |

Stable properties

| | |
|---------------------------------|-----|
| Heat-resistant (Celsius Degree) | - |
| Cold-resistant (Celsius degree) | - |
| UV-resistant | Yes |
| Ground-suited | Yes |
| Flush-mounting suited | Yes |

