

## PRODUCT DATA SHEET

### Product view



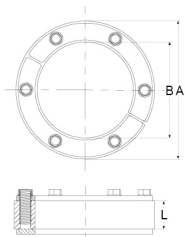
### Product information

QR Code



Product group	Press Seal Type CMS30-D
Item number	<b>CRA21148V2A</b>
EAN-Code	4260391371998
Product name	Press Seal Type CMS30-T, core drill hole/Wall Sleeve 500mm for pipes/cables 0-475mm

### Technical drawing



### Specification

A   Core drill hole (mm)	500
B   Pipes / Cables $\varnothing$ (mm)	0-475
L   Seal (mm)	30
Pressure (bar)	2.5
Tightening torque (Nm)	-
Weight (kg)	0
Material	EPDM / V2A

### Product description

Divided custom-made press seal with freely selectable sizes of pipe/cable diameter; for the installation in core drill holes or wall sleeves; water-tight feed-through for pipes/cables; against pressing water and non-pressing water; water-tight welded bolts for an optimum of steadiness and corrosion protection

### Certificates and approvals

MPA	Yes
CE	-
DIBT	-
SITAC	-
ETA	-

### Stable properties

Heat-resistant (Celsius Degree)	-
Cold-resistant (Celsius degree)	-
UV-resistant	Yes
Ground-suited	Yes
Flush-mounting suited	Yes

