

PRODUCT DATA SHEET

Product view



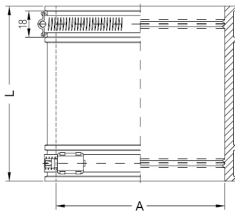
Product information

QR Code



Product group	Wraparound Coupling
Item number	CRA18816
EAN-Code	4260182342497
Product name	Wraparound Coupling CRE 10xx (custom-made)

Technical drawing



Specification

A Size range (mm)	1000-1099
B Size range (mm)	-
L Length (mm)	190
Pressure (bar)	0.6
Tightening torque (Nm)	25.0
Weight (kg)	0
Material	EPDM / V2A

Product description

External flexible standard coupling designed to connect two pipes with the same dimensions (DN) as well as same or different materials and surface textures; shear band ensures joint integrity and pipe alignment under load; outside diameter differences with more than 10 mm have to be compensated with Crassus Bushes; in accordance with DIN EN 295-4; with acoustic decoupling; suitable for horizontal or vertical installation; suitable for flush-mounting and soil; UV-resistant material

Certificates and approvals

MPA	-
CE	Yes
DIBT	-
SITAC	-
ETA	-

Stable properties

Heat-resistant (Celsius Degree)	120
Cold-resistant (Celsius degree)	-40
UV-resistant	Yes
Ground-suited	Yes
Flush-mounting suited	Yes

